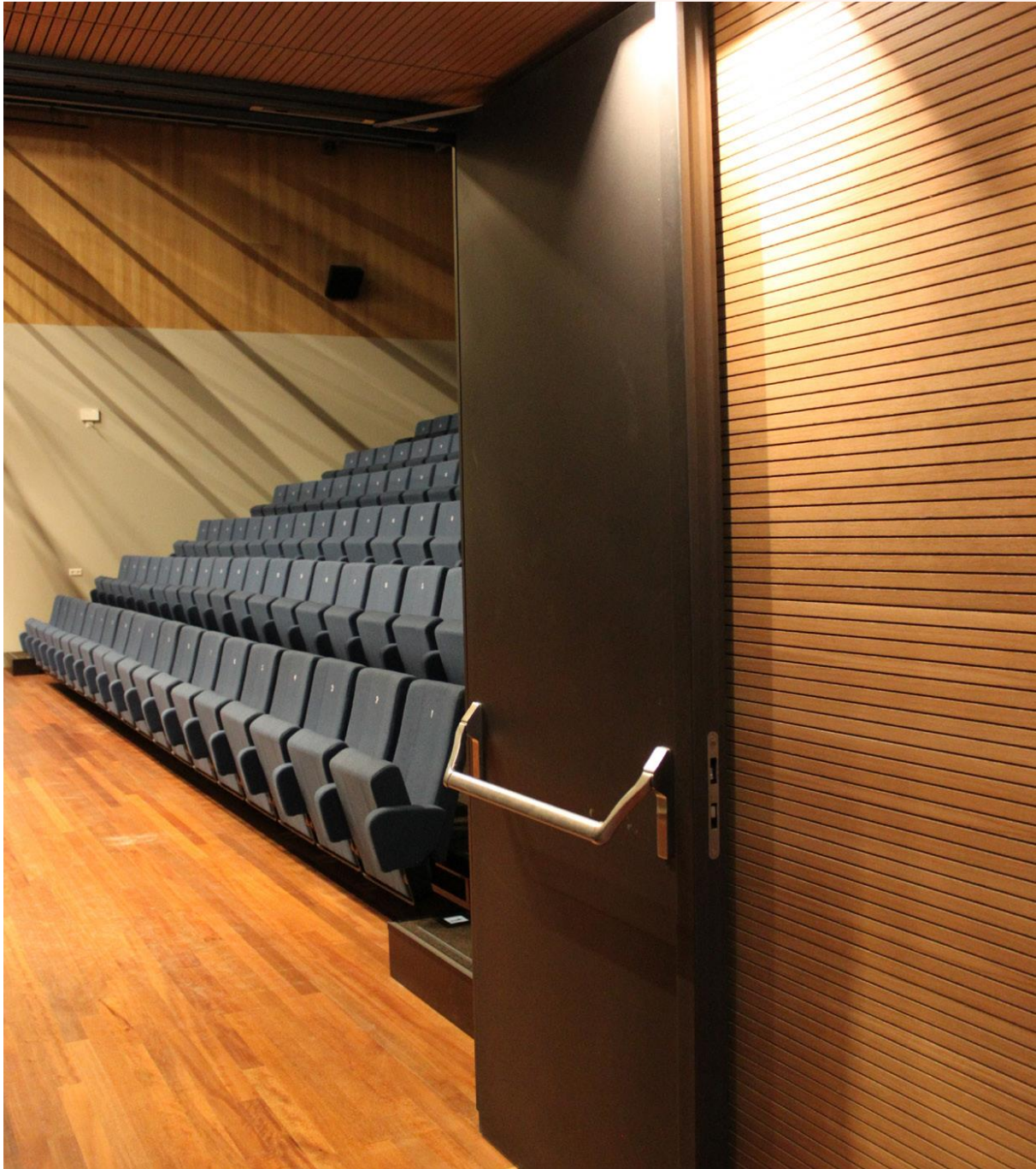


DATASHEET DOORS



WHY CHOOSE OUR DOORS?

- ✓ **Certified:** in interior & exterior doors.
- ✓ **Tailor-made:** manufacture highly specific requirements and custom-made projects.
- ✓ **Hassle-free:** we take care of coordination of engineering, manufacturing, delivering, installing and maintaining doors.

COMBINE PROPERTIES IN A SINGLE DOOR

Create a safe and comfortable building or space by combining different properties:



Sound insulation



Fire-resistant



Burglary resistance



Anti-panic



Access control

MATERIAL

Double-walled door panels with a thickness of 80 mm made of electrolytic galvanized steel plates of different thicknesses, provided with vibration isolation and isolation material, filled with high quality absorption. Aluminium or stainless steel also possible.

Our doors can be made in standard dimensions as well as custom made.

AIRBORNE NOISE INSULATION

Sound reduction index per octave band frequency per door type.

| | 63 | 125 | 250 | 500 | 1k | 2k | 4k | 8k | Hz | Rw (C, Ctr) |
|------------|----|-----|-----|-----|----|----|----|----|----|-------------|
| AL-D/D45 | 19 | 32 | 41 | 40 | 42 | 49 | 51 | - | dB | 45 (-2, -4) |
| AL-D/D50 | 11 | 36 | 43 | 47 | 51 | 51 | 52 | 46 | dB | 50 (-1, -4) |
| AL-D/D52 | 17 | 36 | 46 | 49 | 52 | 54 | 58 | 52 | dB | 52 (-1, -4) |
| AL-D/D54 | 21 | 41 | 48 | 52 | 55 | 55 | 60 | 53 | dB | 54 (0, -3) |
| AL-D/D56 | 29 | 43 | 49 | 52 | 56 | 59 | 63 | 53 | dB | 56 (-1, -4) |
| AL-D/D56-H | 34 | 45 | 48 | 52 | 55 | 55 | 57 | - | dB | 54 (0, -2) |

Sound reduction index per specific standardized sound spectrum per door type.

| | RA house | Ra cinema | RA pop | RA ultra bass | RA dance | RA back-ground music | RA road | RA rail | RA air traffic | RA industry |
|------------|----------|-----------|--------|---------------|----------|----------------------|---------|---------|----------------|-------------|
| AL-D/D45 | 31 | 36 | 40 | 24 | 36 | 42 | 35 | 44 | 43 | 37 |
| AL-D/D50 | 24 | 33 | 38 | 17 | 31 | 43 | 46 | 50 | 48 | 31 |
| AL-D/D52 | 29 | 37 | 42 | 23 | 36 | 47 | 47 | 52 | 50 | 36 |
| AL-D/D54 | 34 | 42 | 46 | 27 | 41 | 51 | 51 | 54 | 53 | 41 |
| AL-D/D56 | 41 | 46 | 50 | 34 | 46 | 54 | 52 | 56 | 54 | 47 |
| AL-D/D56-H | 45 | 47 | 51 | 39 | 49 | 53 | 53 | 54 | 53 | 50 |

FIRE-RESISTANCE

Fire resistance classification with max. dimensions. Only the 50-series has been tested for fire resistance.

Dimensions are opening sizes in mm (clear wall opening) by using a corner frame*

| Classification | Single leafed | | | Double leafed | | |
|----------------|---------------|-------|---------------------|---------------|-------|---------------------|
| | W [m] | H [m] | S [m ²] | W [m] | H [m] | S [m ²] |
| Ew 30 | 1,431 | 3,345 | 4,00 | 3,188 | 3,615 | 9,62 |
| Ew 60 | 1,431 | 3,345 | 4,00 | 3,188 | 3,615 | 9,62 |
| Ew 90 | 1,431 | 3,345 | 4,00 | 3,188 | 3,615 | 9,62 |
| Ew 120 | - | - | - | 3,061 | 3,471 | 9,25 |
| EI2 30 | 1,431 | 3,345 | 4,00 | 3,188 | 3,615 | 9,62 |
| EI2 60 | 1,431 | 3,345 | 4,00 | 3,061 | 3,471 | 9,25 |
| EI2 90 | 1,158 | 2,685 | 3,11 | - | - | - |
| EI1 30 | 1,431 | 3,345 | 4,00 | 3,188 | 3,615 | 9,62 |
| EI1 60 | 1,431 | 3,345 | 4,00 | 3,061 | 3,471 | 9,25 |
| EI1 90 | - | - | - | - | - | - |










W = Width / H = Height / S = Surface

Dimensions are opening sizes in mm (clear wall opening) by using a block frame*

| Classification | Single leafed | | | Double leafed | | |
|----------------|---------------|-------|---------------------|---------------|-------|---------------------|
| | W [m] | H [m] | S [m ²] | W [m] | H [m] | S [m ²] |
| Ew 30 | 1,395 | 3,327 | 3,87 | 3,152 | 3,597 | 9,45 |
| Ew 60 | 1,395 | 3,327 | 3,87 | 3,152 | 3,597 | 9,45 |
| Ew 90 | 1,395 | 3,327 | 3,87 | 3,152 | 3,597 | 9,45 |
| Ew 120 | - | - | - | 3,025 | 3,453 | 9,08 |
| EI2 30 | 1,395 | 3,327 | 3,87 | 3,152 | 3,597 | 9,45 |
| EI2 60 | 1,395 | 3,327 | 3,87 | 3,025 | 3,453 | 9,08 |
| EI2 90 | 1,122 | 2,667 | 2,99 | - | - | - |
| EI1 30 | 1,395 | 3,327 | 3,87 | 3,152 | 3,597 | 9,45 |
| EI1 60 | 1,395 | 3,327 | 3,87 | 3,025 | 3,453 | 9,08 |
| EI1 90 | - | - | - | - | - | - |

*As restriction the height and width are applied as maximum acceptable dimensions. The described dimension for the surface cannot be exceeded.

PERFORMANCES DOORS

| FUNCTION | SYMBOL | APPLICATION | STANDARDS | PERFORMANCES (MAX.) |
|---------------------|---|--|----------------------------------|--|
| FIRE-RESISTANCE |  | EW El ₁ Ei ₂ | Netherlands Belgium Europe | EN 1634-1 |
| BURGLARY-RESISTANCE |  | WK | Europe | EN 1627 EN 1628 EN 1629 EN 1630 |
| SOUND-INSULATION |  | A | Europe | EN ISO 1403 EN ISO 717-1 |
| AIRTIGHTNESS |  | L | Europe | EN 12207 EN 1026 |
| WATER-TIGHTNESS |  | E | Europe | EN 12208 EN 1027 |
| WINDPROOF |  | V | Europe | EN 12210 EN 12211 |
| THERMAL INSULATING |  | T | Europe | EN 10077-1 EN 10077-2 EN 12567-1 |
| ANTI-PANIC |  | | Europe | EN 1125 EN 179 |
| USER-FREQUENCY |  | F | Europe | EN 1191 EN 14600 EN 12400 |

OPTIONS

Our doors are offered with a variety in options.

Hinges and locks

Very wide range of door hinges and locks, such as door fittings, locks, hinges, panic bars and door closers. Mechanical as well as electrical options possible.

Glass

Sound insulating glass in several dimensions.

Block- or Corner frame

Block frame with integrated adjusting mechanism, manufactured from 2 mm galvanized steel plates, which can be mounted directly to a perpendicular stable clear wall opening.

Threshold

Standard: raised threshold with single sealing. All doors can be combined with alternative thresholds, like drop seals, low thresholds, etc.

Please visit our website for a detailed description of our assortment.

Sealing

To guarantee an optimal acoustic sealing, each door leaf and frame is fitted with exclusively designed profiled rubber seals:

- AL-D/D45: profiled rubber on doorleaf.
- AL-D/D50 - 56: profiled rubber on frame and on doorleaf.

Coating & covering

Powder coating or wet-paint composition in RAL- and NCS-colours, supply under certification (e.g. with coating-thickness measurements). Possible with wood finish or photo print - applied by third parties.

Additional accessories

The door can be enhanced by including various additional accessories such as storm door chains, pole contactors, solenoids and such.

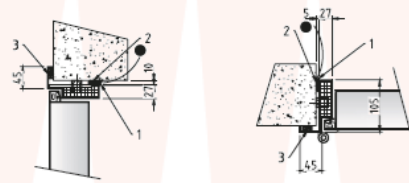
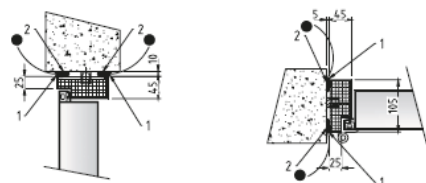


Construction to wall AL-D/D45

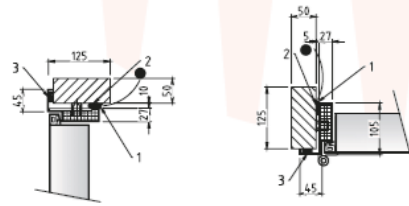
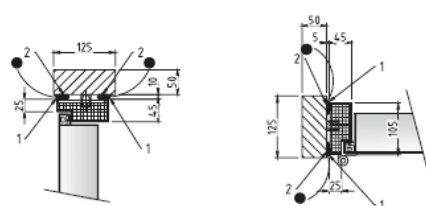
BLOCK FRAME (Standard)

CORNER FRAME (Optional)

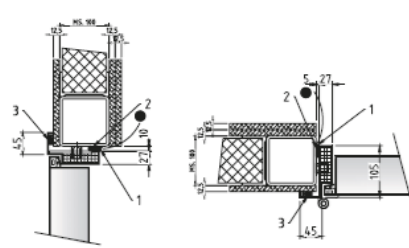
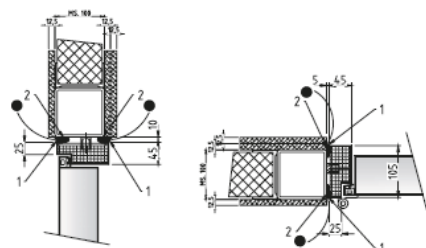
Concrete
wall opening



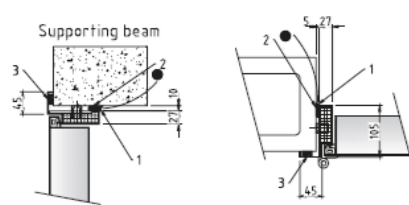
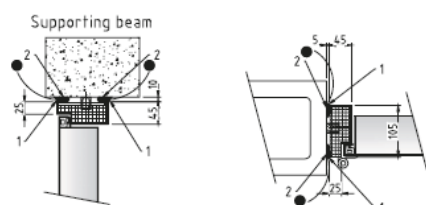
Hardwood
wall opening



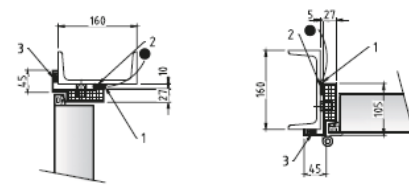
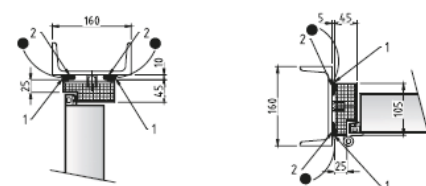
MS100+
Jbe 100x100x5
wall opening



Hollow brick
wall opening



Steel beam UNP
wall opening



Legend: 1 Kit

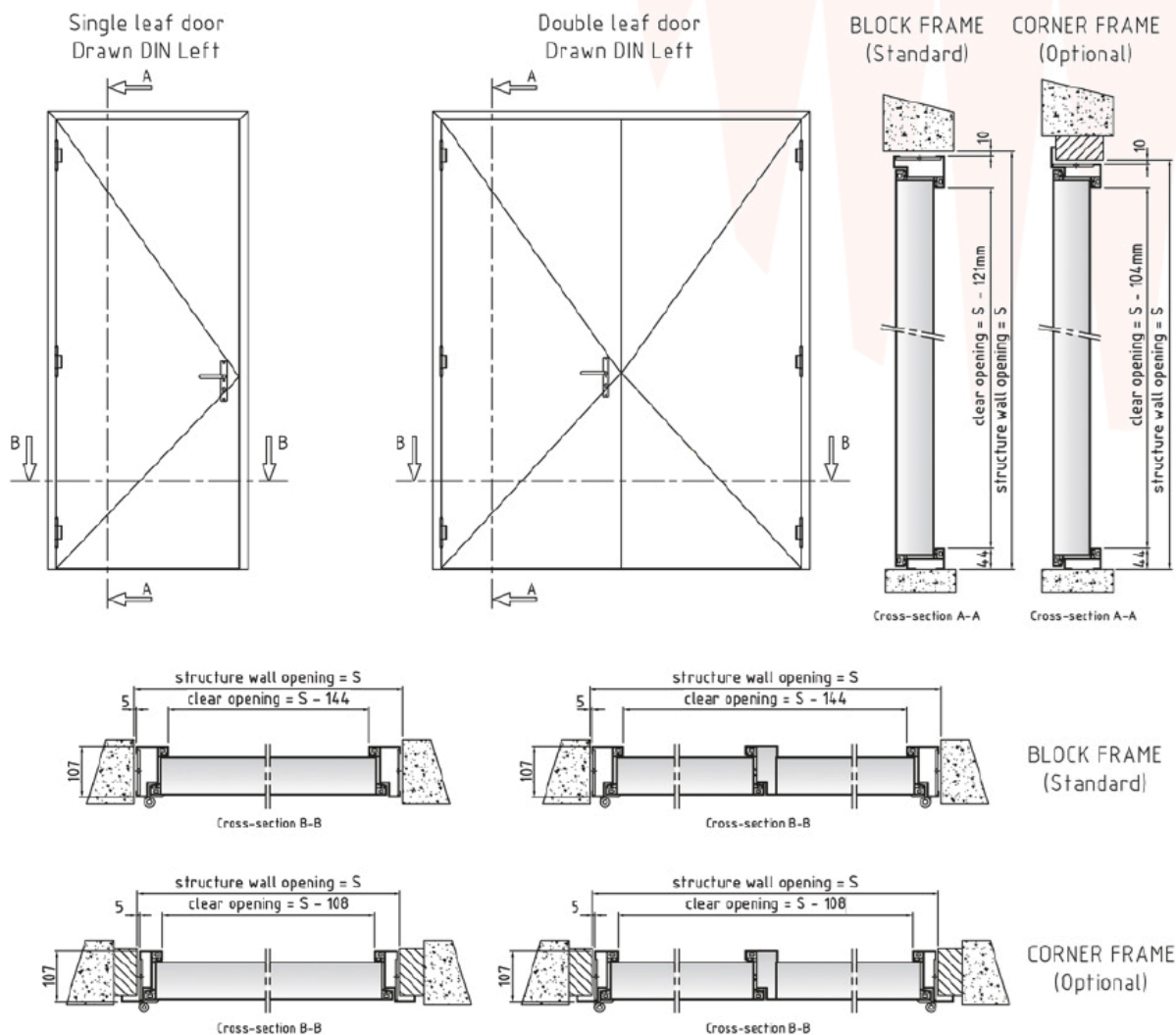
2 Backing foam

3 Swell tape

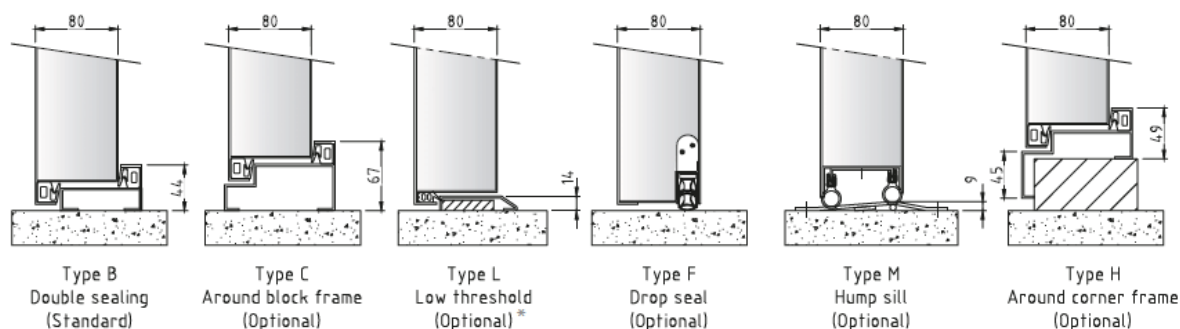
Wall opening constructed by third party

Standard drawings AL-D/D50 - D56

Door thickness of 80 mm.



Thresholds AL-D/D50 - D56



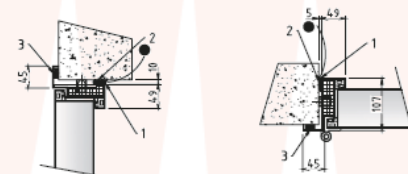
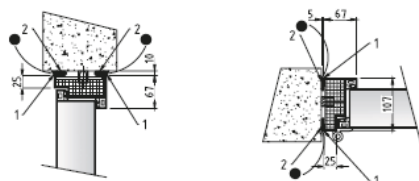
* In case of door type AL-D/D54, 56 and 56-H, without fire resistance, the door leaf is also fitted with a strip of acoustic felt (bottom side).

Construction to wall AL-D/D50 - D56

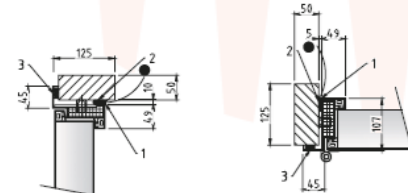
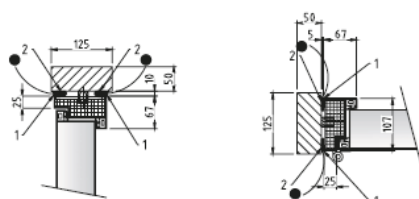
BLOCK FRAME (Standard)

CORNER FRAME (Optional)

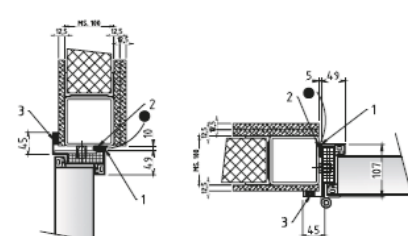
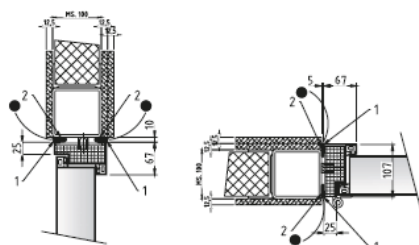
Concrete
wall opening



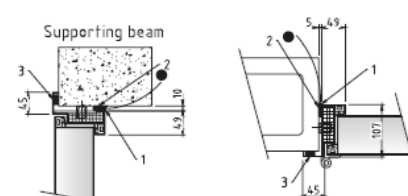
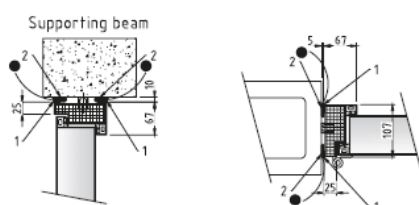
Hardwood
wall opening



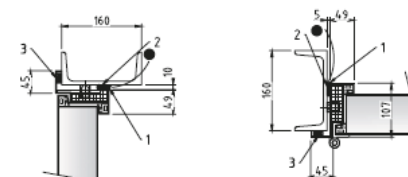
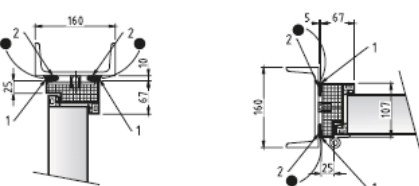
MS100+
Tube 100x100x5
wall opening



Hollow brick
wall opening



Steel beam UNP
wall opening



Legend: 1 Kit

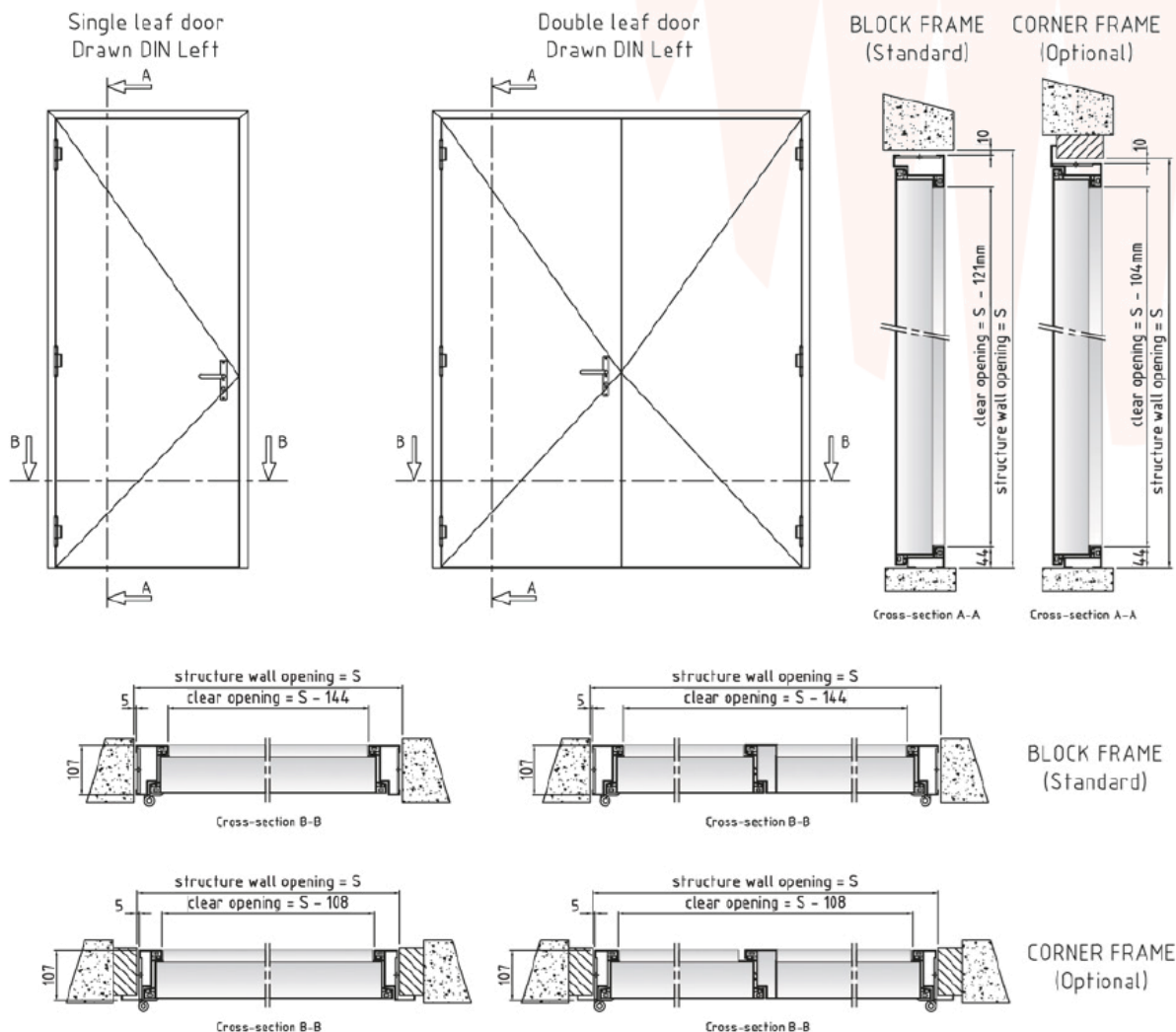
2 Backing foam

3 Swell tape

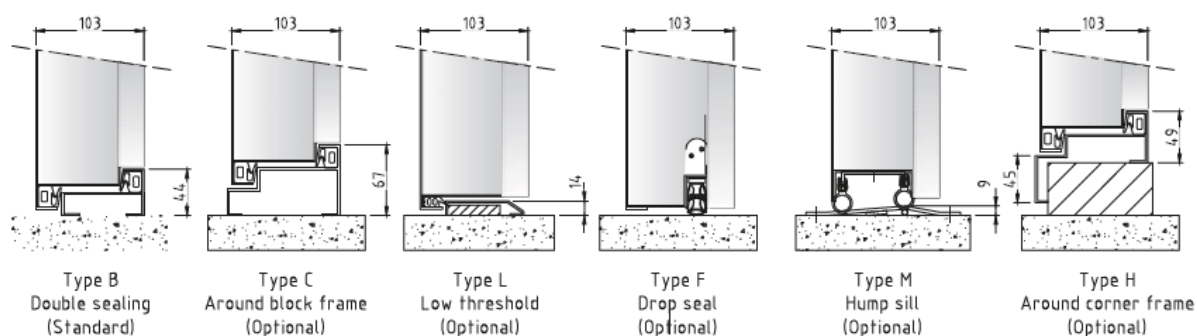
Wall opening constructed by third party

Standard drawings AL-D/D56H

Door thickness of 103 mm.



Thresholds AL-D/D56H



Construction to wall AL-D/D56H

Equal to the details of the AL-D/D50- D56. Keep in mind that the AL-D/D56H doors have a thickness of 103 mm instead of 80 mm.